

Portraits from the École des Beaux-Arts Paris
April 10–June 28, 2015

Main Gallery

Opening Reception: Thursday, April 16, 6–8pm

For further information and images, please contact
Molly Gross, *Communications Director*, The Drawing Center
212 219 2166 x119 | mgross@drawingcenter.org

February 3, 2015



Jacob Ferdinand Voet (b. Antwerp, 1639-1689 – d. Paris, 1700). *Portrait de femme vue de face* [Portrait of a woman viewed frontally (front view)]. Pastel on blue paper, 225 x 160 mm. Inv. No. PM 1779. Paris, Ecole nationale supérieure des beaux-arts. © Beaux-arts de Paris/T. Ollivier/J.-M. Lapellerie.

New York – The Drawing Center will present *Portraits from the École des Beaux-Arts Paris*, an exhibition that explores four hundred years of portrait drawings, emphasizing work from live models. Each week, a different set of four portraits from different centuries and with different formal qualities will be hung "in dialogue" with each other in a specially-built room located in the center of The Drawing Center's Main Gallery. Forty portraits have been chosen from the collection of Beaux-Arts de Paris based on diverse criteria such as the male and female gestures, caricature, frontal gaze, social class, and profession of the model. The room is inspired by the intimate gallery at the Galleria Doria Pamphilj in Rome where Velazquez's portrait of Pope Innocent X (c.1649) hangs, which only accommodates a small number of visitors at a time and was designed to provide a space for close viewing and contemplation without crowds. The remaining thirty-six portraits in the exhibition will be hung on the gallery's outside walls and will be visible to the visitor throughout the exhibition's run.

This unique exhibition will explore the notion of drawn portraiture and provide alternative readings of this important genre of art making within a contemporary context. The selection of works is extensive, ranging from never-before-exhibited drawings by seventeenth-century luminaries Jean-Auguste-Dominique Ingres and Charles Garnier to the work of modern and contemporary masters Henri Matisse and Georg Baselitz to portraits by recent graduates of the Beaux-Arts de Paris. Co-curated by Emmanuelle Brugerolles, Curator of the Drawings collection at the Beaux-Arts de Paris and Brett Littman, Executive Director of The Drawing Center.

ABOUT BEAUX-ARTS DE PARIS

The École nationale supérieure des Beaux-Arts located across the Seine from the Musée du Louvre in the heart of Saint-Germain-des-Prés, is heir to the Académie Royale de Peinture et de Sculpture, founded in 1648 by Louis XIV. Its remarkable drawing collection is second in size only to that of Le Louvre and, thanks to numerous gifts and donations for teaching purposes, includes a number of truly exceptional pieces. Historic, long-preserved state art collections and contemporary artistic creation come together in this institution, whose mission is to educate and train students planning to devote themselves to high-level artistic creation. The collections remain a vital component of teaching and study at the École. For the students, who study, examine, draw from and photograph them, they are a continual source of questioning and reinterpretation. In 1987, the Beaux-Arts de Paris was given a tremendous collection from Mathias Polakovits, who was a *Match* journalist and lived in New York in the 1970s. Many drawings exhibited today in The Drawing Center came from Polakovits' collection.

PUBLICATION

To accompany *Portraits from the École des Beaux-Arts Paris* The Drawing Center will produce an extensively illustrated, 150-page edition in the *Drawing Papers* series featuring an introduction by Brett Littman and Nicolas Bourriaud, Director of Beaux-Arts de Paris, and an essay by the exhibition co-curator Emmanuelle Brugerolles. The catalogue will also include a roundtable discussion between Littman and artists Alex Katz, Ellen Altfest, and Will Cotton about contemporary portraiture. The catalog will be sold through The Drawing Center's bookstore, and website and be distributed by Distributed Art Publishers.

CREDITS

Lead support for *Portraits from the École des Beaux-Arts Paris* comes from Canson.

Additional support is provided by the National Endowment for the Arts, The Robert Lehman Foundation, Ildeko and Gilbert Butler, Catherine and Arthur Williams, Diane Nixon, David Tobey, Elizabeth Eveillard, the Kress Family Foundation, and Jill Newhouse.



ABOUT THE DRAWING CENTER

The Drawing Center is the only not-for-profit fine arts institution in the country to focus solely on the exhibition of drawings, both historical and contemporary. It was established in 1977 to provide opportunities for emerging and under-recognized artists; to demonstrate the significance and diversity of drawings throughout history; and to stimulate public dialogue on issues of art and culture.

LOCATION, HOURS & ACCESSIBILITY

35 Wooster Street between Broome and Grand Streets in SoHo, New York.

Gallery hours are Wednesday-Sunday 12pm–6pm, Thursday, 12pm–8pm.
Tickets: \$5 Adults, \$3 Students and seniors, Children under 12 are free, and
free admission Thursdays 6-8pm.

The Drawing Center is wheelchair accessible.

FACEBOOK: [The Drawing Center](#)

TWITTER: [twitter.com/drawingcenter](#)

TUMBLR: [the-drawing-center.tumblr.com](#)

INSTAGRAM: [instagram.com/drawingcenter](#)

AT THE DRAWING CENTER

<i>Tomi Ungerer: All in One</i>	Through March 22, 2015
<i>James Sheehan: Death of Malevich</i>	Through October 2015
<i>Portraits from the École des Beaux-Arts Paris</i>	April 10–June 28, 2015
<i>Natalie Frank: The Brothers Grimm</i>	April 10–June 28, 2015
<i>Open Sessions 3</i>	April 10–May 15, 2015
<i>Abdelkader Benchamma: Representation of Dark Matter</i>	April 10–March 2016
<i>Rachel Goodyear</i>	April 10–March 2016
<i>İnci Eviner</i>	May 29–June 28, 2015

###

Portraits from the *École des Beaux-Arts Paris*

April 10–June 28, 2015

Images Available for Reproduction

For further information and images, please contact
Molly Gross, *Communications Director*, The Drawing Center
212 219 2166 x119 | mgross@drawingcenter.org



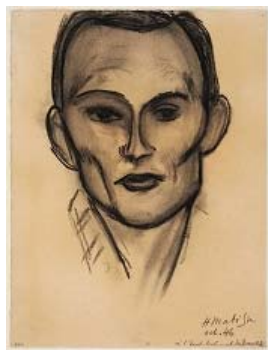
Gian Lorenzo Bernini (b. Naples, 1598 – d. Rome, 1680). *Portrait d'Agostino Mascardi* (Portrait of Agostino Mascardi). Black chalk, red chalk, and highlights of white chalk, 262 x 192 mm. Inv. No. EBA 435. Paris, Ecole nationale supérieure des beaux-arts. © Beaux-arts de Paris/T. Ollivier/J.-M. Lapellerie.



Jacob Ferdinand Voet (b. Antwerp, 1639-1689 – d. Paris, 1700). *Portrait de femme vue de face* [Portrait of a woman viewed frontally (front view)]. Pastel on blue paper, 225 x 160 mm. Inv. No. PM 1779. Paris, Ecole nationale supérieure des beaux-arts. © Beaux-arts de Paris/T. Ollivier/J.-M. Lapellerie.



André Dutertre (b. Paris, 1753 – d. Paris, 1842). *Portrait de l'aide de camp de Mourad Bey* (Portrait of Murad Bey's aide-de-camp). Charcoal, 522 x 374 mm. Inv. No. PC 11155-47a. Paris, Ecole nationale supérieure des beaux-arts. © Beaux-arts de Paris/T. Ollivier/J.-M. Lapellerie.



Henri Matisse (b. Le Cateau-Cambrésis, 1869 – d. Nice, 1954). *Portrait de Franz Villier* (Portrait of Franz Villier). Charcoal on paper, 425 x 322 mm. Inv. No. EBA 1240. Paris, Ecole nationale supérieure des beaux-arts. © Beaux-arts de Paris/T. Ollivier/J.-M. Lapellerie.



Georg Baselitz (b. Deutschbaselitz, 1938 –). *Sans titre (Marcel Duchamp)* [Untitled (Marcel Duchamp)], 2001. Pen, India ink, and wash of India ink, 778 x 575 mm. Inv. no. EBA 5367. Paris, Ecole nationale supérieure des beaux-arts. © Beaux-arts de Paris/T. Ollivier/J.-M. Lapellerie.



Claire Tabouret (b. Pertuis, 1981 –). *Les Débutantes.1* (The debutantes.1), 2014. Acrylic and vinyl paint on paper, 610 x 460 mm. Private collection.