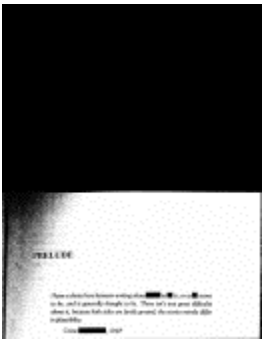


*The Intuitionists*  
July 11 – August 24, 2014

Main Gallery and The Lab  
Opening Reception: Thursday, July 10, 6–8pm

For further information and images, please contact  
Molly Gross, Communications Director, The Drawing Center  
212 219 2166 x119 | [mgross@drawingcenter.org](mailto:mgross@drawingcenter.org)

July 10, 2014



Nyeema Morgan, *Like It Is: Prelude*, 2014.  
Dimensions and media variable. Courtesy of the artist.

New York – The Drawing Center presents *The Intuitionists*, a collaborative project organized by artists Heather Hart, Steffani Jemison, and Jina Valentine, and curated by Lisa Sigal, Open Sessions Curator. Inspired by Colson Whitehead's 1999 novel *The Intuitionist*—a work of speculative fiction that explores the relationship between progress, technology, and difference—the exhibition considers how the collection, the database, and the aggregate serve as complementary models for the organization of information and objects in flux. Using the keywords that organize The Drawing Center's Viewing Program database (e.g. “autobiographical,” “geometric,” “historical,” “consumer culture”) as a point of departure, the exhibition installation features artworks by over sixty artist members of the Viewing Program.

Hart, Jemison, and Valentine searched the Viewing Program registry for works that exist at the intersection of unusual keywords. These Viewing Program artists were then invited to submit an artwork that responded to a word or phrase from the novel. The artworks in *The Intuitionists* exhibition are hung according to the sequence determined by Whitehead's book. The Lab features a collaboration by Hart, Jemison, and Valentine inspired by Whitehead's book *The Intuitionist*, using letters of the alphabet to form an interpretive drawing. The artists in *The Intuitionist* are: Shaun Acton, Valerio Berruti, A.J. Bocchino, Dana Boussard, Hannah Burr, Maria Bussman, Enrique Chagoya, Joyce Chan, Catalina Chervin, Hannah Cole, Kenny Cole, Vincent Colvin, Hollis Cooper, Cui Fei, Gabriel Delgado, Wendy DesChene, Asya Dodina and Slava Polishchuk, Debra Drexler, Derek Dunlop, Elisabeth Eberle, Lisa Endriss, Rodney Ewing, Tory Fair, Douglas Florian, Nicholas Fraser, Carl Fudge, Brett Goodroad, Barry Gray, Stephen Grossman, Nathan Haenlein, Patrick Earl Hammie, Skowmon Hastanan, HENSE, Elizabeth Hoak-Doering, Cynthia

Ona Innis, Tatiana Istomina, Hedwige Jacobs, Chiaki Kamikawa, Manfred Kirschner, Kimia Kline, Nicholas Knight, Kang Joo Lee, Kate Tessa Lee, Cynthia Lin, Hung Liu, Maess, Mario Marzan, Linn Meyers, Nyeema Morgan, Paul Morrison, Seamus Liam O'Brien, Alison Owen, Jenny Perlin, Mel Prest, Jo Ann Rothschild, Anna Schachte, Fausto Sevilla, Jill Shoffiet, Thomas Slaughter, Chris Spinelli, Karen Tam, Caroline Tavelli-Abar, Scott Teplin, Jen Urso, Kris Van Dessel, Kara Walker, and Margaret Withers.

#### ABOUT THE VIEWING PROGRAM

Since 1977, when The Drawing Center opened, the Viewing Program has been vital to the institution and beneficial to artists worldwide. Selections exhibitions, curated from the Viewing Program registry, allowed the institution to present new trends, methods, and expansive approaches in the field of drawing. Selections shows were also often important platforms for introducing artists to a broader public. *The Intuitionists* is the final Selections show, as the Viewing Program's core values and legacy will be continued by The Drawing Center's new program, [Open Sessions](#).

#### ABOUT HEATHER HART

Based in Brooklyn, New York, Heather Hart has been an artist-in-residence at Skowhegan, RBPW, Santa Fe Art Institute, Open Sessions at The Drawing Center, Fine Arts Work Center, LMCC Workspace, and the Whitney ISP. She has received grants from Joan Mitchell Foundation, Harvestworks, Jerome Foundation, and a fellowship from NYFA. Her work has been included in a variety of publications and exhibited at Socrates Sculpture Park, Seattle Art Museum's Olympic Sculpture Park, the Studio Museum in Harlem, Art in General, The Drawing Center, No Longer Empty, Museum of Arts and Craft in Itami, Portland Art Center, Figure One at University of Illinois, and the Brooklyn Museum. She studied at Cornish College of the Arts in Seattle, Princeton University in New Jersey, and received her MFA from Mason Gross School of the Arts at Rutgers University. Hart will be an artist-in-residence at Bemis and the Hermitage in 2014.

#### ABOUT STEFFANI JEMISON

Steffani Jemison is an artist based in Brooklyn, New York. Her work has been exhibited nationally and internationally at the New Museum of Contemporary Art, the Royal Danish Academy of Fine Art, LAXART, the Studio Museum in Harlem, Laurel Gitlen, Team Gallery, the Elizabeth Foundation for the Arts, and other venues. She has presented performances and lectures at the

Museum of Modern Art (NYC), the Institute of Contemporary Art (Philadelphia), and the Menil Collection (Houston), among others, and her work has been reviewed in *Artforum*, *Art in America*, *FlashArt*, and *Mousse*. Jemison has been an artist-in-residence at Project Row Houses, the Core Program at the Museum of Fine Arts Houston, the Skowhegan School of Painting and Sculpture, the Studio Museum in Harlem, and the International Studio and Curatorial Program. She is a 2013 Art Matters Foundation grantee, a 2014 Louis Comfort Tiffany Biennial awardee, and a 2014–2015 artist-in-residence at Smack Mellon. She received a BA in Comparative Literature from Columbia University and an MFA from The School of the Art Institute of Chicago.

#### ABOUT JINA VALENTINE

Jina Valentine was born in Pennsylvania and is based in North Carolina. She has exhibited widely, including at The Drawing Center, the Studio Museum in Harlem, the CUE Foundation, the Elizabeth Foundation, the DiRosa Preserve, Southern Exposure, Marlborough Gallery, and the Fleisher Ollman Gallery. She has participated in residencies at the Atlantic Center for the Arts, Women's Studio Workshop, Sculpture Space, the Skowhegan School of Painting and Sculpture, the Santa Fe Art Institute, and the Cité Internationale des Arts in Paris. She has received numerous awards for her work including a Joan Mitchell MFA Grant and a San Francisco Arts Commission Fellowship. Jina received her BFA from Carnegie Mellon University and her MFA from Stanford University. She is currently an Assistant Professor of studio art at the University of North Carolina Chapel Hill.

#### PUBLIC PROGRAMS

In two public programs, musicians, authors, and artists playfully interpret the Viewing Program's artist registry.

##### Thursday, July 24 at 6:30pm

Program 1: "There is so much you have never said to your companion"

Current and former Drawing Center curators including Nayland Blake, Peter Drake, Nina Katchadourian, Byron Kim, Brett Littman, and George Negroponte and affiliates perform a live enactment of the Viewing Program selection process, followed by an informal discussion between the curators and the audience.

##### Thursday, July 31 at 6:30pm

Program 2: "That thing between you and your words."

In this performance, Colson Whitehead, author of *The Intuitionist*, and entertainer Reggie Watts present lively improvisational descriptions of images chosen from the Viewing Program artist registry. With Heather Hart, Steffani Jemison, and Jina Valentine.

## PUBLICATION

To accompany *The Intuitionists*, The Drawing Center will produce an edition in the Drawing Papers series that will include a text collaboratively written by the artists Heather Hart, Steffani Jemison, and Jina Valentine, as well as an excerpt from N. Katherine Hayle's *How We Think: Digital Media and Contemporary Technogenesis*.

## CREDITS

*The Intuitionists* is made possible by the support of The Evelyn Toll Family Foundation and with public funds from the New York City Department of Cultural Affairs in partnership with the City Council.



## ABOUT THE DRAWING CENTER

The Drawing Center is the only not-for-profit fine arts institution in the country to focus solely on the exhibition of drawings, both historical and contemporary. It was established in 1977 to provide opportunities for emerging and under-recognized artists; to demonstrate the significance and diversity of drawings throughout history; and to stimulate public dialogue on issues of art and culture.

## ABOUT THE DRAWING CENTER

The Drawing Center is the only not-for-profit fine arts institution in the country to focus solely on the exhibition of drawings, both historical and contemporary. It was established in 1977 to provide opportunities for emerging and under-recognized artists; to demonstrate the significance and diversity of drawings throughout history; and to stimulate public dialogue on issues of art and culture.

## LOCATION, HOURS & ACCESSIBILITY

35 Wooster Street between Broome and Grand Streets in SoHo, New York.  
Gallery hours are Wednesday-Sunday 12pm–6pm, Thursday, 12pm–8pm.  
Tickets: \$5 Adults, \$3 Students and seniors, Children under 12 are free, and free admission Thursdays 6-8pm.

The Drawing Center is wheelchair accessible.

FACEBOOK: [The Drawing Center](#)

TWITTER: [twitter.com/drawingcenter](#)

TUMBLR: [the-drawing-center.tumblr.com](#)

## AT THE DRAWING CENTER

*The Intuitionists*

*Small.*

*Thread Lines*

*Xanti Schawinsky: Head Drawings and Faces of War*

*Sari Dienes*

Open Sessions #3

*Tomi Ungerer: All in One*

*Abdelkader Benchamma: Representation of Dark Matter*

*Portraits from the École des Beaux-Arts Paris*

July 11–August 24, 2014

July 11–August 24, 2014

September 19–December 14, 2014

September 19–December 14, 2014

October 8–November 16, 2014

November 21–December 14, 2014

January 9–March 22, 2015

March 2015–2016

April 10–June 28, 2015

*Natalie Frank: The Brothers Grimm*  
Open Sessions #4  
*Ínci Eviner*

April 10–June 28, 2015  
April 10–May 15, 2015  
May 29–June 28, 2015

# # # #

# *The Intuitionists*

## July 11 – August 24, 2014

### Images Available for Reproduction

For further information and images, please contact  
Molly Gross, Communications Director, The Drawing Center  
212 219 2166 x119 | [mgross@drawingcenter.org](mailto:mgross@drawingcenter.org)



Kenny Cole, *MDNJPN*, 2014  
Gouache on paper  
8 1/2 x 7 inches (21.6 x 17.8  
cm). Courtesy of Aucocisco  
Gallery.



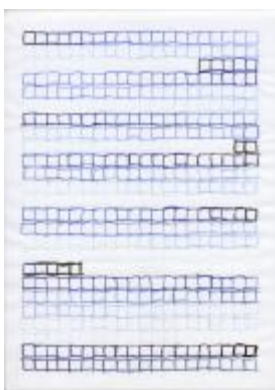
Cui Fei, *Leaves*, 2014, Mixed media  
8 1/2 x 4 1/4 x 1 1/2 inches (21.6 x  
10.8 x 3.8 cm). Courtesy of the artist.



Patrick Earl Hammie, *Platform*, 2014  
Oil on mylar, 84 x 11 inches (213.36 x  
27.94 cm). Courtesy of the artist.



Manfred Kirschner,  
*Kunsttheorieuntersetzer - Lila-Mae*,  
2014. Drawing / C-print, 11 7/10 x  
8 3/10 inches (29.69 x 21 cm).  
Courtesy of the artist.



Jenny Perlin, *Sequence*  
(detail), 2007, Ink on  
vellum, set of 160  
drawings. Each 11 7/10 x  
8 1/5 inches (29.7 x 21  
cm). Courtesy the artist  
and Simon Preston, New  
York.



Thomas Slaughter, *Boy Scout Jack  
Knife*, 2014, Ink on paper  
9 x 12 inches (22.86 x 30.48 cm).  
Courtesy of the artist.