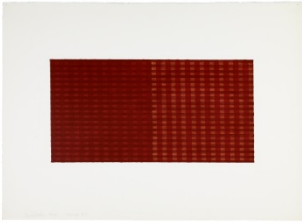


*Sean Scully: Change and Horizontals*  
September 27–November 3, 2013  
Main Gallery

Opening Reception: Thursday, September 26, 6–8pm

For further information and images, please contact  
Molly Gross, *Communications Director*, The Drawing Center  
212 219 2166 x119 | [mgross@drawingcenter.org](mailto:mgross@drawingcenter.org)

July 18, 2013



Sean Scully, *Change #7*, 1975.  
Acrylic and tape on paper, 22  
1/2 x 30 2/3 inches. Courtesy  
Neo Neo Inc., New York.

New York –The Drawing Center presents *Sean Scully: Change and Horizontals*, a focused survey that comprises Sean Scully’s (b. 1945, Dublin, Ireland) acrylic, ink, graphite, and masking-tape drawings from 1974–75—presented together for the first time in over thirty years—as well as two large-scale paintings from the same period. Scully’s maturation as a painter can easily be traced back to innovations in his early drawings. These works are marked by refined geometries that re-imagine the history of abstraction as an art rooted in experience—“something felt and something seen,” as the artist has said.

Executed in London and New York City respectively, the *Change* and *Horizontals* drawings, along with their preparatory sketches and experimental typewritten drawings, highlight Scully’s core concern with line and color’s relation to place. Viewed together, the works chart an evolution of composition and gesture that provide unique insight into this artist’s singular aesthetic. This exhibition is the final stop on a transcontinental tour that included Timothy Taylor Gallery, London, UK, and traveled to Middlesbrough Institute of Art, Middlesbrough, UK; Walter Storms Galerie, Munich, Germany; and Galleria nazionale d’arte moderna e contemporanea, Rome, Italy. Co-curated by Brett Littman, Executive Director, and Joanna Kleinberg Romanow, Assistant Curator.

#### ABOUT THE ARTIST

Among numerous solo exhibitions worldwide, Sean Scully has had several major retrospectives, including those at Whitechapel Gallery, London, in 1989, which traveled to Palacio Velazquez,

Madrid, Spain, and Stadtische Galerie im Lenbachhaus, Munich, Germany; *Sean Scully: Twenty Years, 1976–1995* at Hirshhorn Museum and Sculpture Garden, Washington, D.C., which traveled to High Museum of Art, Atlanta, Georgia, La Caixa des Pensions, Barcelona, Irish Museum of Modern Art, Dublin, Ireland, and Schirn Kunsthalle, Frankfurt, Germany; *Wall of Light* at The Phillips Collection, Washington D.C., in 2005, which traveled to Modern Art Museum of Fort Worth, Texas, Cincinnati Art Museum, Ohio, and The Metropolitan Museum of Art, New York; *Sean Scully. A Retrospective* in 2007, which traveled to Fundació Joan Miró, Barcelona, Spain, Musee d'art moderne, St. Etienne, France, and MACRO al Mattatoio, Rome, Italy; and *The Imagery of Sean Scully* in 2009 at MKM Museum Küppersmühle für Moderne Kunst, Duisburg, Germany, which traveled to the Ulster Museum in Belfast, UK. His most recent retrospective opened at Kunstmuseum Bern, Switzerland, and Lentos Kunstmuseum, Linz, Austria in 2012. Scully was born in 1945 in Dublin and currently lives and works in New York, Barcelona, and Mooseurach, Germany.

#### PUBLIC PROGRAM

##### Wednesday, October 9 at 6:30pm

A 30-minute exhibition walk-through lead by Sean Scully and one of the exhibition's curators, followed by a reading of *Audition* by Colm Tóibín featured in Drawing Papers no. 99.

#### PUBLICATION

To accompany *Sean Scully: Change and Horizontals*, The Drawing Center has published an edition in the Drawing Papers series that features a specially commissioned short story by renowned writer Colm Tóibín, as well as an essay by the exhibition curators and color plates of all the works in the exhibition.

#### ABOUT THE DRAWING CENTER

The Drawing Center is the only not-for-profit fine arts institution in the country to focus solely on the exhibition of drawings, both historical and contemporary. It was established in 1977 to provide opportunities for emerging and under-recognized artists; to demonstrate the significance and diversity of drawings throughout history; and to stimulate public dialogue on issues of art and culture.

#### HOURS & ACCESSIBILITY

Gallery hours are Wednesday-Sunday 12pm–6pm, Thursday, 12pm–8pm.  
The Drawing Center is wheelchair accessible.

FACEBOOK: [The Drawing Center](#)

TWITTER: [twitter.com/drawingcenter](https://twitter.com/drawingcenter)

TUMBLR: [the-drawing-center.tumblr.com](http://the-drawing-center.tumblr.com)

PINTEREST: [pinterest.com/drawingcenter/](https://pinterest.com/drawingcenter/)

AT THE DRAWING CENTER

<i>Ken Price: Slow and Steady Wins the Race</i>	Through August 18, 2013
<i>Terry Smith: Document</i>	Through August 18, 2013
<i>Susan Hefuna and Luca Veggetti</i>	September 16–20, 2013
<i>Sean Scully: Change and Horizontals</i>	September 27–November 3, 2013
<i>Alexis Rockman: Drawings from Life of Pi</i>	September 27–November 3, 2013
<i>Drawing Time, Reading Time</i>	November 22, 2013–January 12, 2014
<i>Dickinson/Walser: Scattered Ways</i>	November 22, 2013–January 12, 2014
<i>Ferran Adrià: Notes on Creativity</i>	January 25–February 28, 2014
<i>Deborah Grant: Christ You Know It Ain't Easy!!</i>	January 25–February 28, 2014
<i>Rashaad Newsome: FIVE (The Drawing Center)</i>	March 6–11, 2014
<i>Andrea Bowers and Suzanne Lacy (title TBD)</i>	March 15–26, 2014

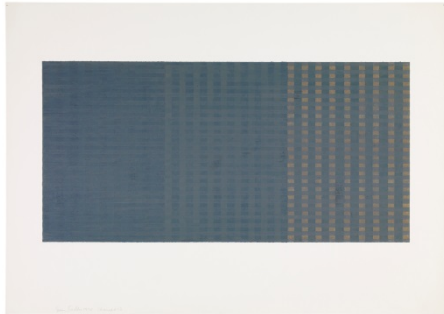
###

# *Sean Scully: Change and Horizontals*

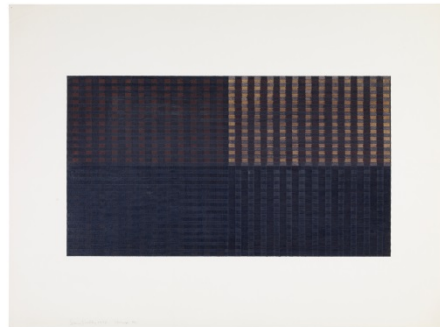
September 27–November 3, 2013

## Images Available for Reproduction

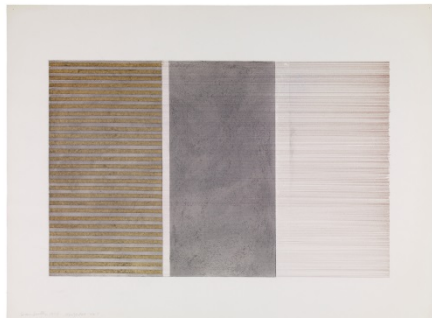
For further information and images, please contact  
Molly Gross, *Communications Director*, The Drawing Center  
212 219 2166 x119 | [mgross@drawingcenter.org](mailto:mgross@drawingcenter.org)



Sean Scully, *Change #22*, 1975, Acrylic and tape on paper, 21 1/2 x 30 1/2 inches, Courtesy Neo Neo Inc., New York



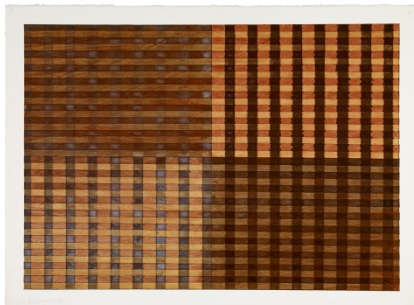
Sean Scully, *Change #42*, 1975, Acrylic and tape on paper, 22 1/3 x 30 1/3, Courtesy Neo Neo Inc., New York



Sean Scully, *Horizontals #1*, 1975, Acrylic, tape, ink and graphite on paper, 21 3/4 x 29 3/4 inches, Courtesy Neo Neo Inc., New York



Sean Scully, *Horizontals #5*, 1975, Acrylic, tape, ink and graphite on paper, 22 x 29 15/16 inches, Courtesy Neo Neo Inc., New York



Sean Scully, *Untitled*, 1975, Acrylic and tape on paper, 22 11/16 x 30 11/16 inches, Courtesy Neo Neo Inc., New York



Sean Scully, *Grey Red Grey*, 1975, Acrylic and tape on canvas, 68 x 72 inches, Courtesy Neo Neo Inc., New York